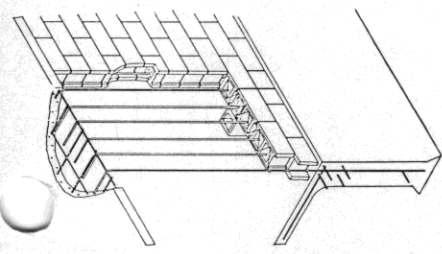
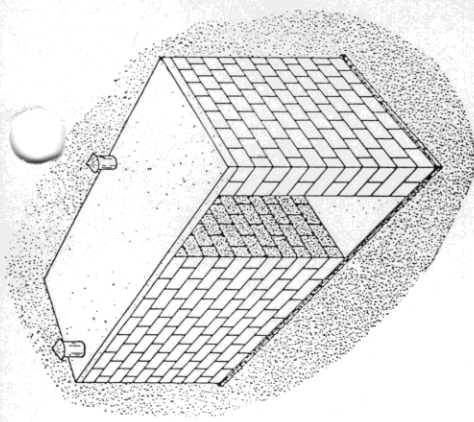


FLOOR PLAN



CUT-AWAY ISOMETRIC OF SIDEWALL AND ROOF
(NOT TO SCALE)

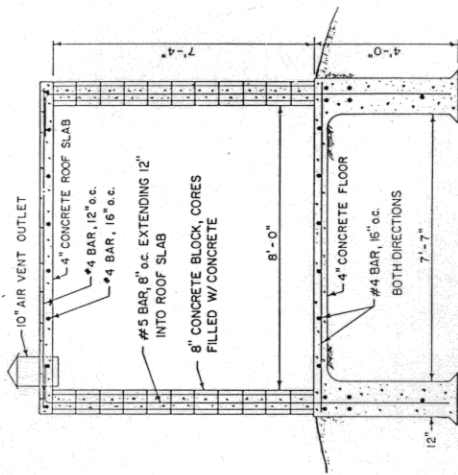


PERSPECTIVE (NOT TO SCALE)

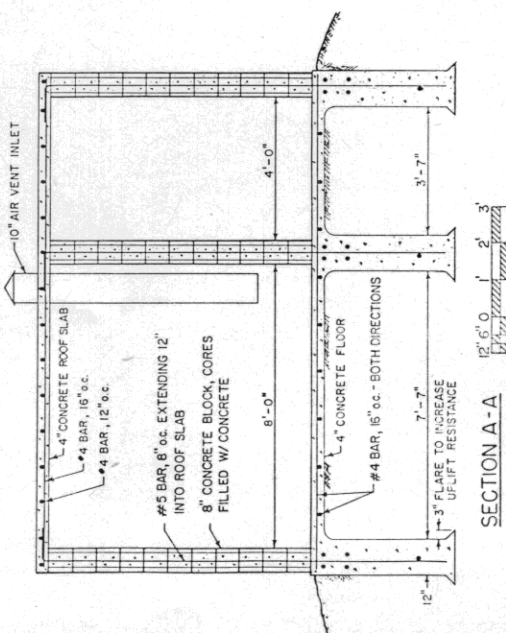
NOTES:

THIS SHELTER IS DESIGNED TO WITHSTAND THE PRESSURES INDICED BY A 260 MPH WIND AS RECOMMENDED BY "INTERIM GUIDELINES FOR BUILDING OCCUPANT PROTECTION FROM TORNADOES AND EXTREME WINDS", TR-83A, DEFENSE CIVIL PREPAREDNESS AGENCY, SEPTEMBER, 1975.

SHELTER OPENING SHOULD FACE AWAY FROM PROBABLE STORM DIRECTION. EASTERN EXPOSURES FIT THE NEED FOR MOST OF U.S. . . . CONSULT LOCAL BUILDING AUTHORITIES BEFORE STARTING CONSTRUCTION.



SECTION B-B



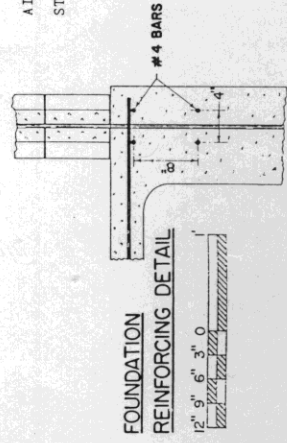
SECTION A-A

GENERAL SPECIFICATIONS

- CONCRETE: 3,500 PSI MINIMUM COMPRESSIVE STRENGTH
- STEEL: 40,000 PSI MINIMUM YIELD STRENGTH REINFORCEMENT BARS. OVERLAP SPLICES A MINIMUM OF 12 INCHES AND USE WIRE TIES TO SECURE. DO NOT WELD.
- CONCRETE MASONRY: 8-INCH SAND AND GRAVEL BLOCKS
- MORTAR: TYPE M OR S
- JOINT REINFORCEMENT: PLACE HORIZONTAL, TRUSS-DESIGN, REINFORCEMENT AT EVERY HORIZONTAL MORTAR JOINT. OVERLAP SPLICES A MINIMUM OF 6 INCHES AND USE WIRE TIES TO SECURE.
- GROUT: USE NOT LESS THAN 6 BAGS PORTLAND CEMENT PER CUBIC YARD OF GROUT AND AGGREGATE NO LARGER THAN 1/2-INCH DIAMETER.
- OTHER USE: ALTHOUGH STRUCTURE MAY BE SUITABLE FOR VEGETABLE OR OTHER STORAGE IT SHOULD NOT BE USED FOR THAT PURPOSE AS IT WILL REDUCE CAPACITY AND MAY BLOCK ENTRY.

BILL OF MATERIALS

DESCRIPTION	QUANTITY
CONCRETE FOUNDATION AND FLOOR	10.5 CU. YD.
ROOF GROUT (ALL CORES FILLED)	2 CU. YD.
MORTAR	6 CU. YD.
CONCRETE BLOCK	296
STRETCHER	56
DOUBLE CORNER	11
HALF CORNER	22
REINFORCED CONCRETE LINTEL, 4'-8" LENGTH	2
REINFORCING STEEL NO. 5 (3/8-INCH DIA.)	820 FT.
NO. 4 (1/2-INCH DIA.) JOINT REINFORCEMENT	700 FT.
AIR VENT (10-INCH DIA.)	8 FT.
STEEL DOOR AND FRAME, 3'-0" X 6'-8"	1



FOUNDATION REINFORCING DETAIL

COOPERATIVE EXTENSION SERVICE
AGRICULTURE AND HOME ECONOMICS

UNITED STATES DEPARTMENT OF AGRICULTURE COOPERATING

ABOVE-GROUND STORM SHELTER

OK 1985 6376 SHEET 1 OF 1